

PNG deep-sea biodiversity exploration and PNG views of it

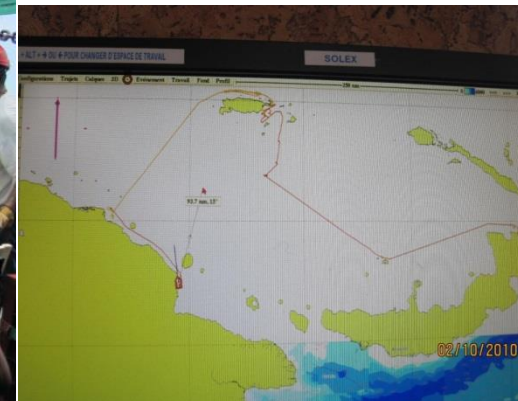
Ralph Mana

University of Papua New Guinea

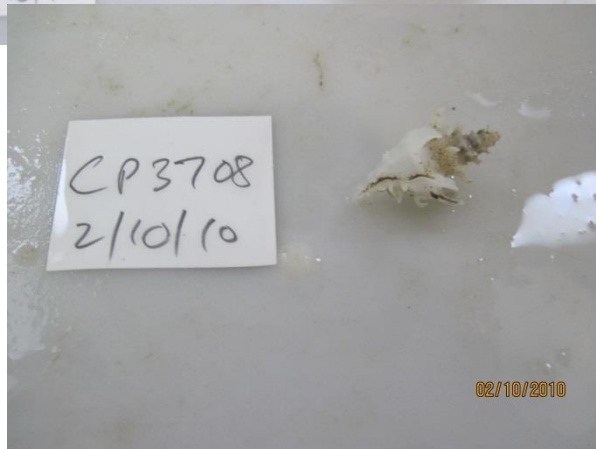
Impacts from the Expeditions-as seen from PNG Perspective

1. Exposure to foreign experts in various skills and field know-how in species collection, storage, transport, identification and DNA bar-coding...over 20 students & staff involved
2. Deep-sea biodiversity data and its relevance to mining exploration under sea (Solwara 1 Project by Nautilus at Bismarck sea and Deep-sea tailing placement system at Basamuk bay for Nickel mining operation. Pacific Marine Industrial Zone development at Madang Lagoon area.
3. Follow-up research such as anthropological work at Kavieng by Ariadna 2015 and CO2 seep system an Milne Bay and Kavieng 2016. Prof Bouchet hunt for rare snails...and appeal for one more expedition to cover southern part of PNG to compete the entire country
4. Writing papers and publications

BioPapua Deep-sea Expedition 2010



BioPapua Samples



BioPapua Expedition 2010



Prof. Shao of Academia Sinica 2011



Visit to NMNH Paris 2012



Papua Niugini Expedition 2012



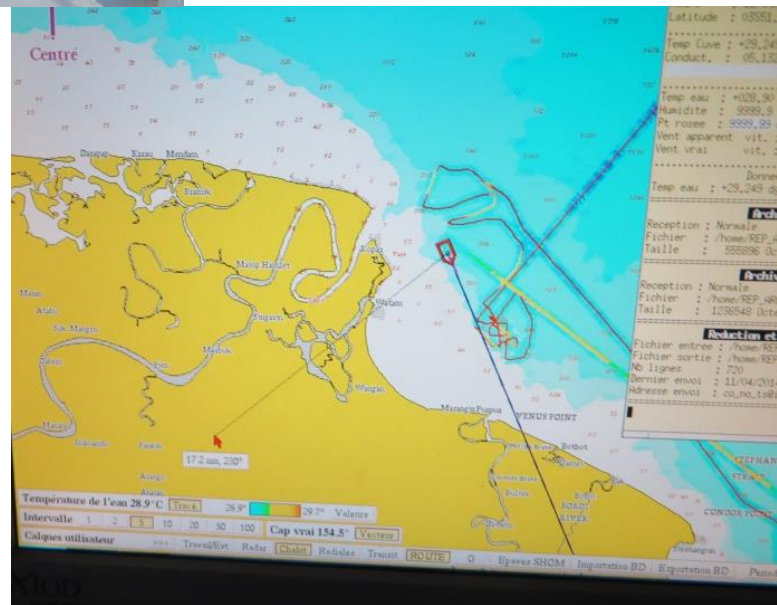
2012 Team



Samples at Basamuk Bay 2012

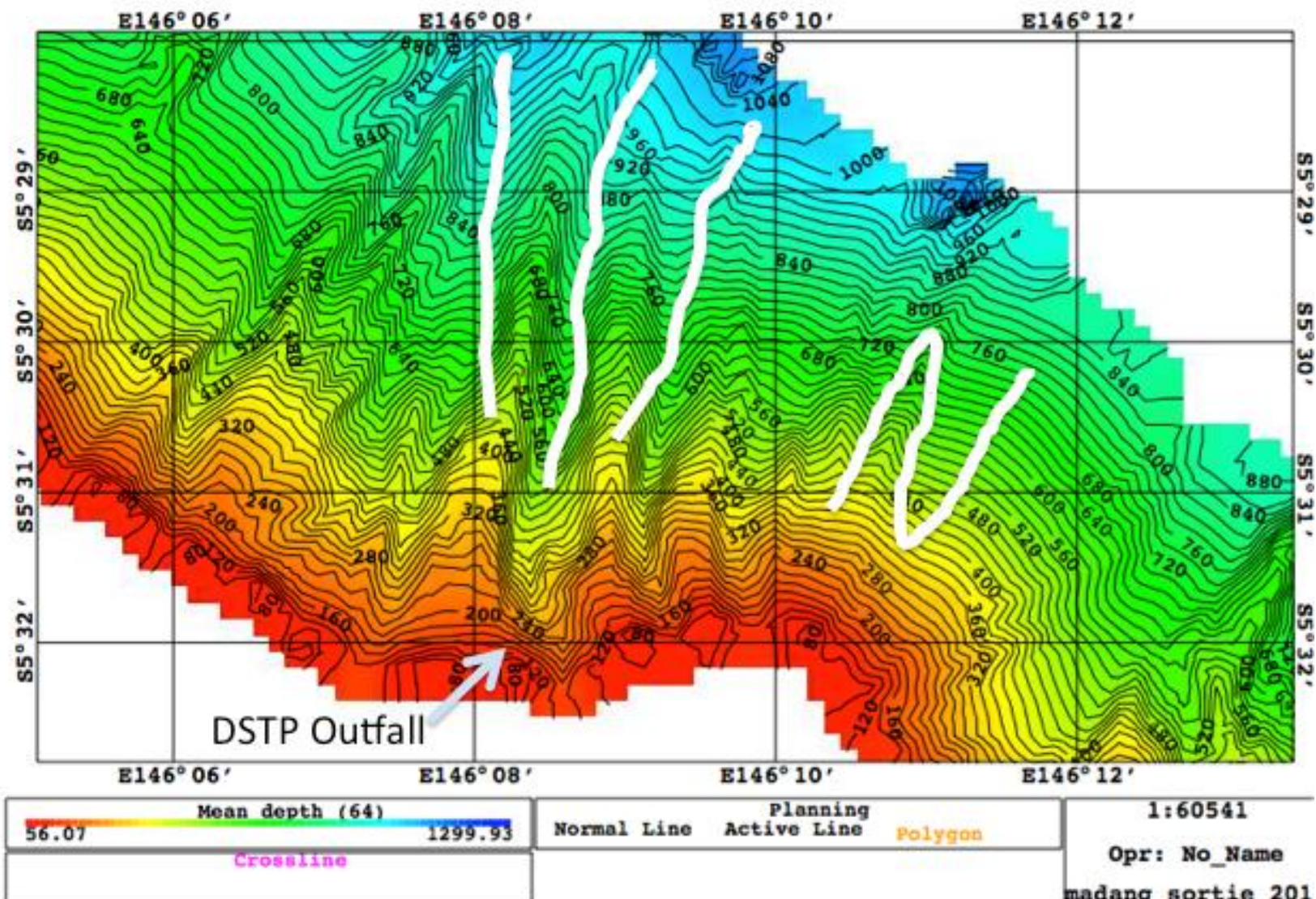


MADEEP and Kavieng Expedition 2014



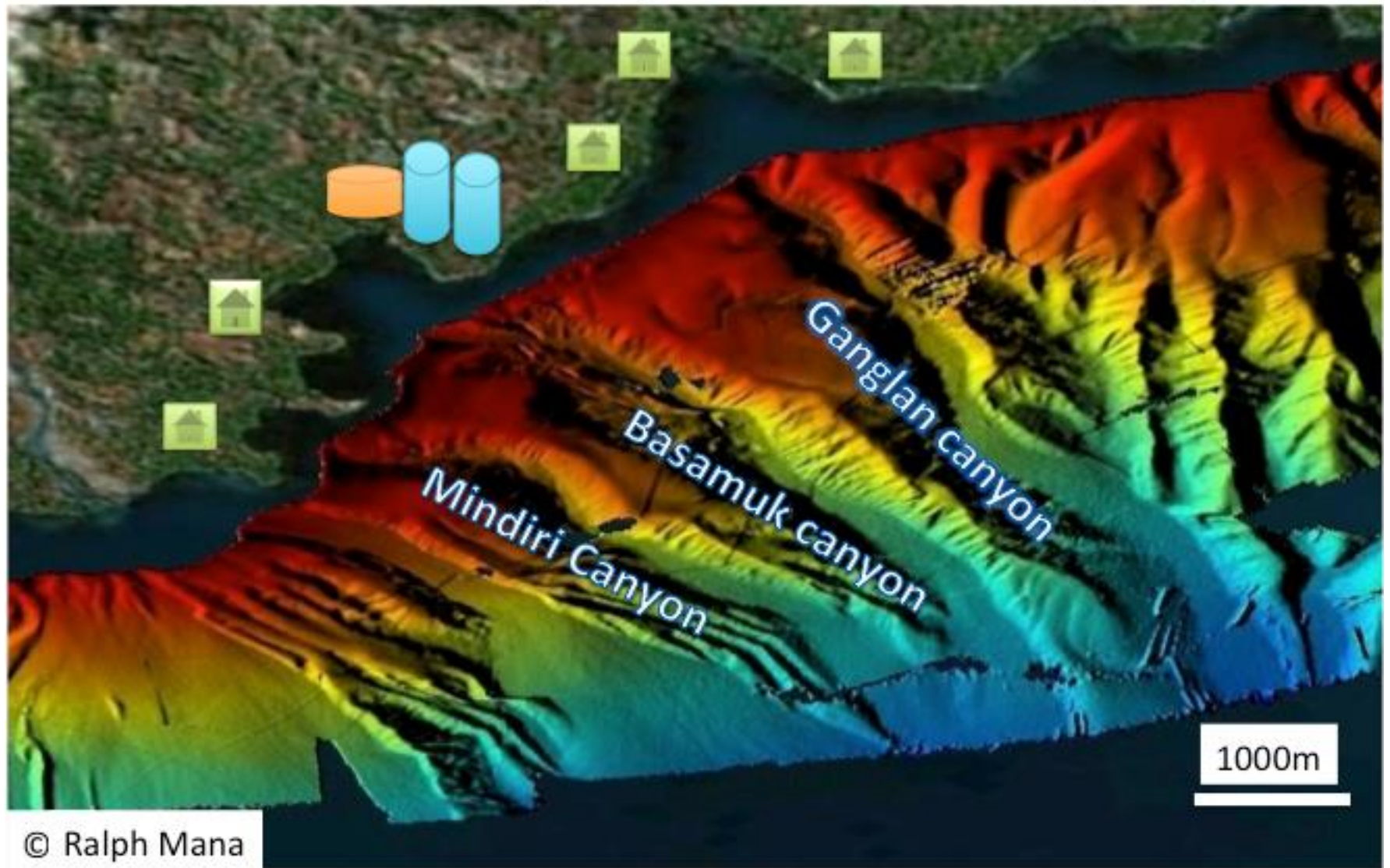
MADEEP Kavieng Expedition





©Ralph Mana

Nickel Cobalt Plant, Canyons and Surrounding Villages



Basamuk Canyon Dive at 560m deep

Beginning of dive

5°30'51"S 146°08'30"E



300m above seafloor

5°30'51"S 146°08'30"E



200m above seafloor

5°30'51"S 146°08'30"E



100m above seafloor

5°30'51"S 146°08'30"E



100m above seafloor

5°30'45"S 146°08'30"E



100m above seafloor

5°30'36"S 146°08'35"E



Basamuk Canyon Dive at 700m deep

Beginning of Dive

5°30'03"S 146°08'40"E



5°30'03"S 146°08'40"E



260m above seafloor

5°30'03"S 146°08'40"E



60m above seafloor

5°30'03"S 146°08'40"E



Near seafloor 700m

5°30'03"S 146°08'40"E



Seafloor 700m

5°30'01"S 146°08'40"E



Gorgonian soft coral

Seafloor 780m

5°29'38"S 146°08'40"E



Shrimp

Seafloor 1000m

5°28'15"S 146°09'07"E



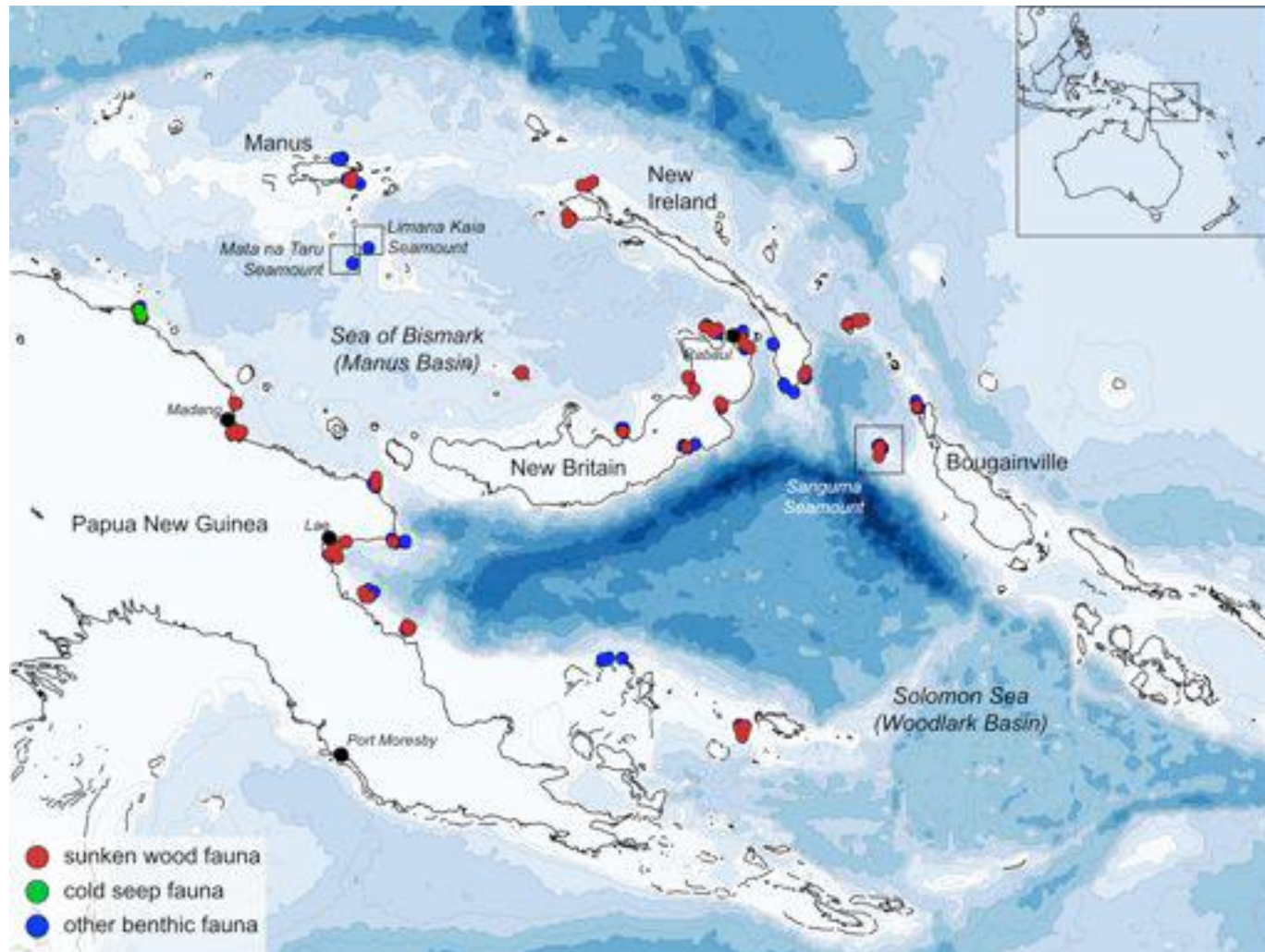
MADEEP Kavieng Expedition 2014



The figure is a composite map of the Pacific Islands region, specifically focusing on Papua New Guinea and the Solomon Islands. The main map shows the coastline of Papua New Guinea, with labels for 'Papouasie Nouvelle Guinée', 'Mer de Bismarck', 'Lalangai Island', 'New Britain', 'Port Moresby', 'Dyke Ackland Bay', 'Mer des Salomon', and 'Normanby Island'. Two yellow arrows point from specific locations on the map to two inset satellite images. The top inset shows Ambitle Island with Tutum Bay (zone #2) marked with a yellow asterisk. The bottom inset shows Normanby Island. The map is credited to Google Earth.



Southern Region Needs to be Inventoried- Milne Bay to Western Provinces



New seashell named after me

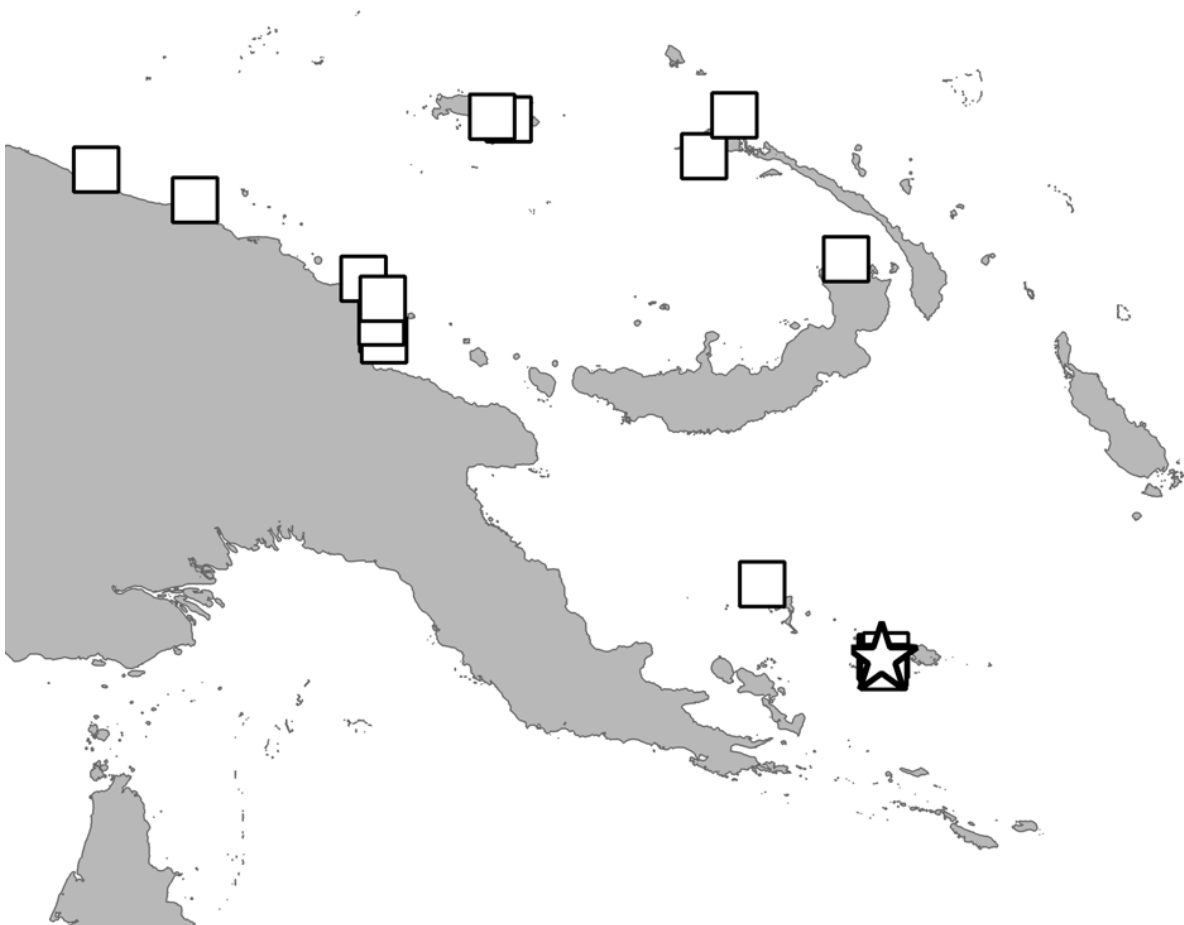
My heartfelt appreciation goes to
the 2 authors

Professors Roland HOUART and
Virginie HÉROS



Scabrotrophon manai

Etymology. — Named after Ralph Mana, professor at University of Papua New Guinea, and the counterpart of Sarah Samadi and Philippe Bouchet for the MNHN expeditions in Papua New Guinea. Dr Mana was a participant in both the BIOPAPUA and PAPUA NIUGINI expeditions.



Acknowledgment

- My sincere thanks goes to Prof. Bouchet and NMNH in making my trip to Paris possible to attend the milestone occasion
- I also want to mention Alice for her time and energy in getting the pieces together so I can be here at the symposium
- Finally but not the least my appreciation goes out to all who make this event a successful one.